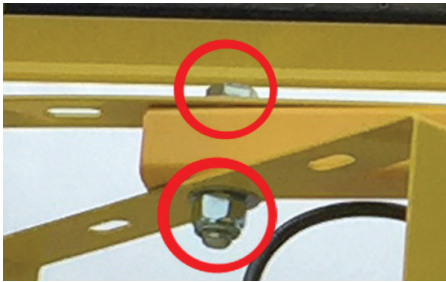


Beacon LED Tower Retrofit Installation Guide

Installing the Beacon980 LED lights onto your existing tower light is easy. Below are three simple steps for the retrofit installation onto your existing tower light, and if you have any additional questions, please contact Lind Equipment at info@lindequipment.net.

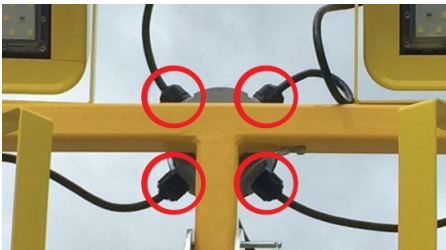
Our lawyers would like us to remind you that any electrical work is inherently dangerous. Use qualified personnel and follow any and all electrical codes for your area.

Step 1. Remove Existing Bulb-based Fixtures



Make sure all power is off. Remove the light fixture wiring from the junction box that sits at the cross bar. Take your existing light fixtures physically off of your light tower right where the yoke meets the crossbar.

Step 2. Replace Bulb-based Fixtures One-for-One with Lind



Attach the yoke of the LE980LED in exactly the same places where the bulb-based fixtures were attached to the crossbar. Wire in the cords from the Beacon980 lights into the junction box. Your qualified electrician can help with this, or we can provide some thoughts. Just contact us.

Step 3. Wire Around The Old Bulb Ballast so The LED Lights Connect Directly to The Generator Power Source

Locate the ballast. It's a box-like device that will be wired inline with the electrical cord going to the lights. It's almost always located inside the housing of the generator, or on the base of the two-wheeled cart. You've probably replaced one or two of these in your day (see our blog post on the hidden costs of operating a diesel light tower).

For light towers, remove the ballast and connect the wiring from the lights to the wiring that was going into the ballast from the generator. You'll need a bit of electrical skill here to add a bit of wire safely.

For two-wheeled carts, simply disconnect the wire that comes out of the ballast and attach a new plug so that the light heads can be connected directly to the power source.

